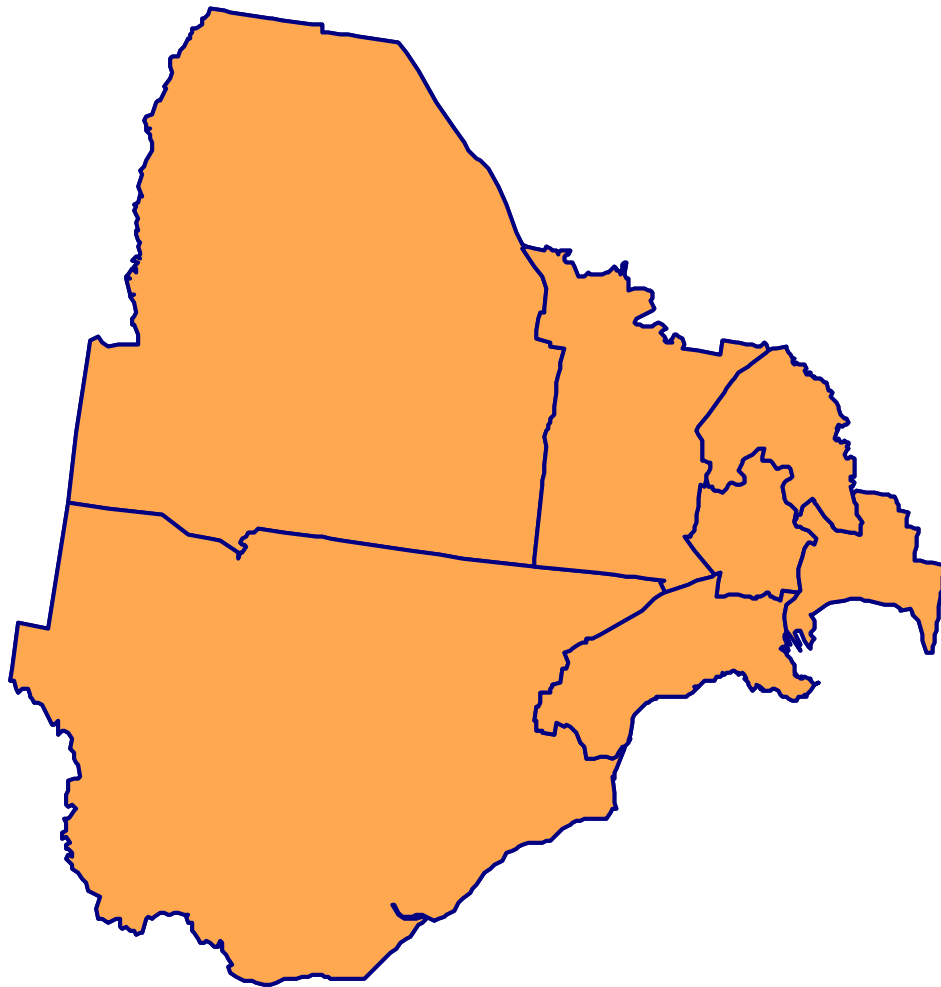


Western Metropolitan Region

Health and Social Wellbeing Profile



November 2000
2nd Edition: January 2002

The Region Distilled

To summarise the West in a few key points, it is marked by the following characteristics:

- The Western Region is an area of great diversity with areas of affluence and poverty, and of homogeneity and heterogeneity. Overall the West is mildly socio-economically disadvantaged.
- The Region is the most culturally diverse area in Victoria. Over a third of the Region's population were not born in this country, or speak a language other than English at home. Within the region, the municipalities of Brimbank and Maribyrnong have very culturally diverse populations
- The largest cultural communities in the region include those from the former Yugoslavia, Vietnam, Italy, Malta, and Greece.
- Poor health status for men in several municipalities. Maribyrnong has particularly poor health status for men and women.
- The West consists of established inner municipalities with reasonably static populations and developing outer suburbs with rapidly expanding populations.
- The outer region consists of some rural areas with large satellite communities.
- There is a declining manufacturing industry located in clusters.
- Key commercial centres are at Melton, Werribee, Moonee Ponds, St Albans, Footscray, Maribyrnong, and Taylor's Lakes.
- Radial road transport networks linked by the Western Ring Road.

Contents

The Region Distilled	2
Contents	3
Introduction	4
Population and Geography	5
Current Population	6
Western Region Population Age Profile	9
Population Projections	11
Population Share Between Municipalities	12
Transport	13
Indigenous Communities	15
Prior to European Settlement	15
The Indigenous Community Today	15
Culturally and Linguistically Diverse Communities	17
Country of Birth	18
Language Spoken at Home	18
Proficiency in English	19
Recent Migrants and Refugees	20
Cultural Diversity and Socio-economic Status.	22
Health Status	23
Life Expectancy	23
Disability Adjusted Life Years	24
Issues for the Future	26
Socio-Economic Factors	27
Socio-Economic Disadvantage	27
Unequal in Life	29
Unemployment	30
Industry	31
Living Arrangements	32
Index	35

Introduction

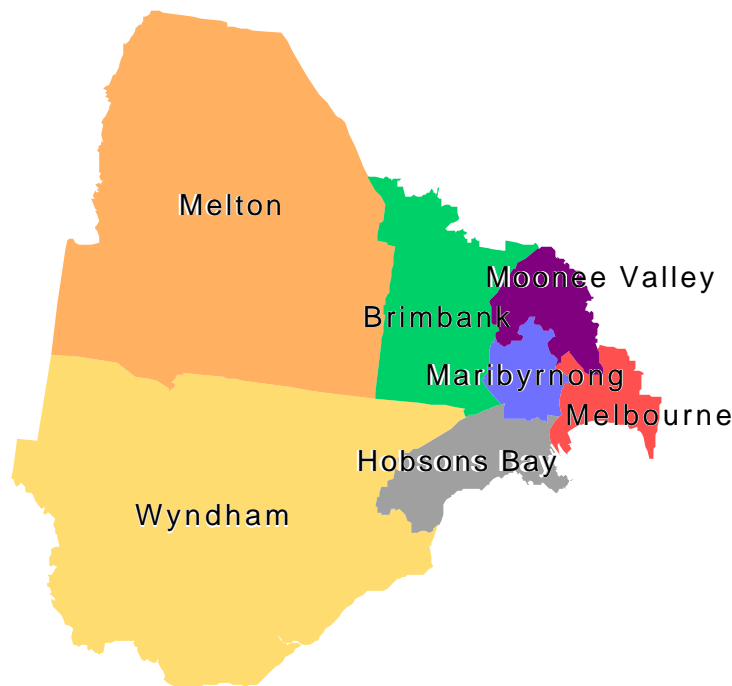
This document outlines a number of socio-demographic indicators that are useful in describing some of the key community needs for the population of the Western Metropolitan Region.

The Western Metropolitan Region of the Department of Human Services comprises the municipalities of Brimbank, Hobsons Bay, Maribyrnong, Melbourne, Melton, Moonee Valley, and Wyndham.

Data is presented by Local Government Area (LGA), and as a Region total. Where possible, comparisons have been made with the Melbourne Statistical Division, and with Victoria as a whole.

The Western Metropolitan Region is a culturally and socio-economically diverse region. This document aims to provide a profile of the population of the region which includes demographic information about:

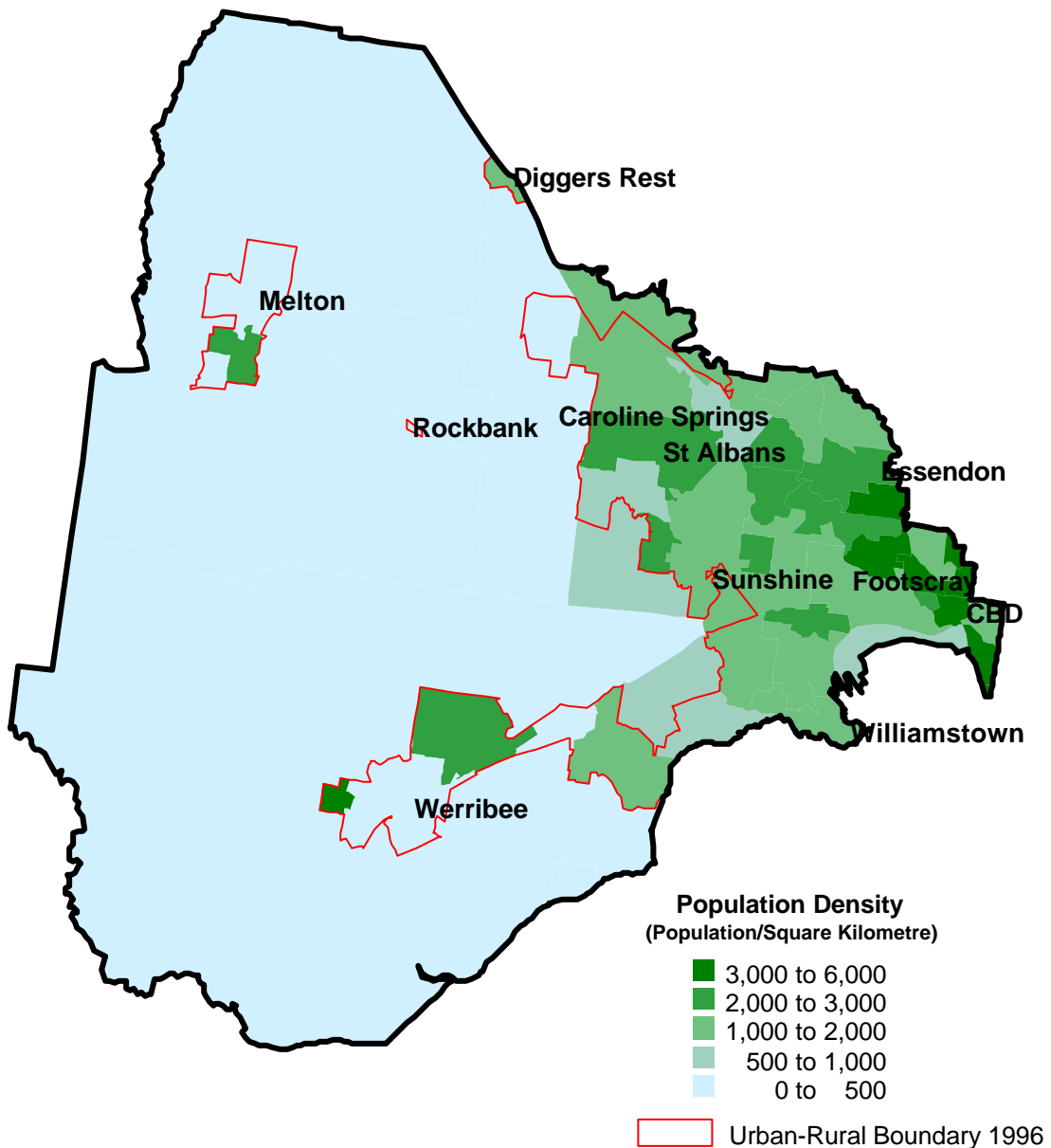
- Current population size and projected population growth
- Cultural and linguistic diversity
- Health status
- Socio-economic factors.



Population and Geography

The Western Metropolitan Region extends from the Central Business District to Toolern Vale in the northwest and Little River in the southwest. The region is comprised of a mix of densely populated inner suburban areas (such as Flemington and Kensington); slightly less populated outer urban areas (for example Caroline Springs); and rural/urban areas (municipalities of Melton and Wyndham). Beyond the urban area, major satellite communities exist at Werribee and Melton, and to a lesser extent at Diggers Rest and Rockbank.

Population Density by Postcode – Western Metropolitan Region 2000¹



¹ Source: ABS 2000 Estimated Resident Population

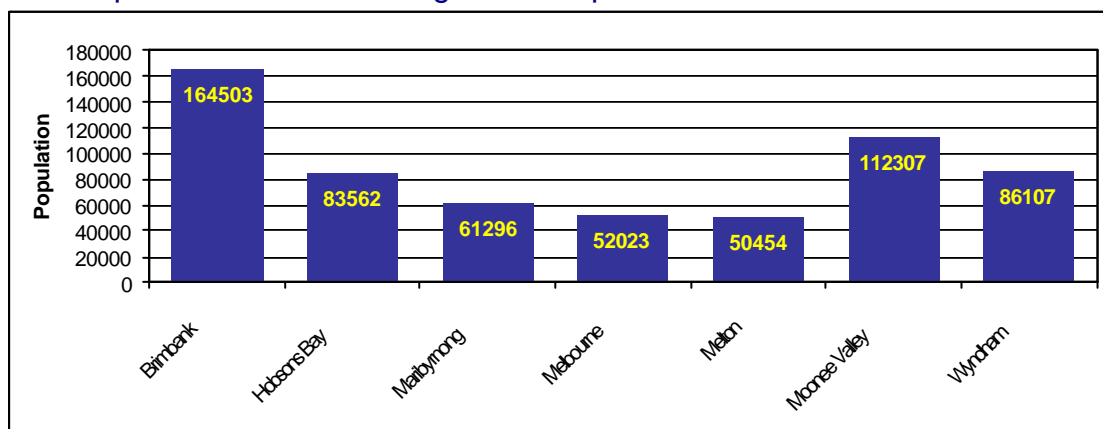
Historically, the West has been considered a less desirable residential location than areas on the other side of the city. This may in part be due to the physical geography of the region and the prevailing westerly winds. Tough volcanic basalt erupting from now-extinct volcanoes in the region was relatively liquid, which in the outer West has created a level surface with few hills and valleys to provide shelter, the exceptions to this being the valleys cut by rivers and creeks such as the Maribyrnong. This is compounded by the shallow soils covering tough bedrock, in which trees do not grow well, and the presence in some places of noxious industry until the mid-to-late 20th century. At the time this created at least the impression of a wind-swept plain with a working-class population chiefly employed in heavy and manufacturing industry, some of which was smelly or potentially poisonous². This view of the West became a self-fulfilling prophecy by lowering housing prices, which attracted low-income earners and caused the middle-class population to choose to live elsewhere.

More recently, some inner areas have become fashionable and seen increased housing prices. In outer areas population growth is occurring through new developments such as Caroline Springs. The Shire of Melton had a population growth rate of 9.6% between 1999 and 2000, the highest growth rate in Melbourne, and its population is expected to more than double in the next twenty years. In addition, with the development of the Docklands area the inner municipalities are also experiencing growth – the City of Melbourne also had a growth rate of 9.6% in 1999 to 2000. However, the predicted growth for the inner municipalities over the next twenty years is small compared to growth for Wyndham and Melton.

Current Population

The graph below shows the ABS Estimated Resident Population (ERP) of the WMR by Local Government Area as at June 30, 2000. The total Regional population at this time was estimated to be 610,252 people.

2000 Population of Western Region Municipalities³



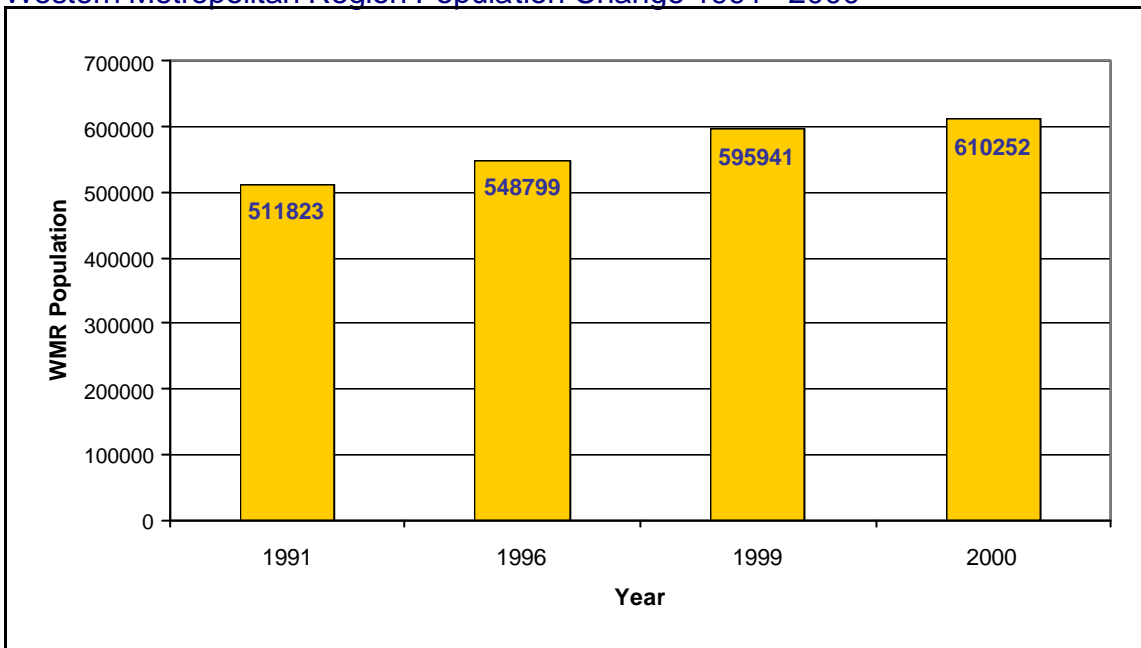
² The old Kensington cattle yards and Footscray tannery are examples of this.

³ Source: ABS 2000 Estimated Resident Population.

The 2000 data indicates that Brimbank (164,503) and Moonee Valley (112,307) have the largest populations. Melton is the least populated (50,454 persons) although it is catching up to Melbourne (52,023 people).

The following graph shows the change in population for the Western Region. In 2000, the population of 610,252 had increased from 595,941 in 1999 (+2.4%), 548,799 at the 1996 Census (+11.2%), and 511,823 at the 1991 Census (+19.2%).

Western Metropolitan Region Population Change 1991 - 2000⁴



Recent Population Change⁵

Since the last Census, the most rapid growth in the Western Region has taken place in the five postcodes shown in the table below:

Postcode	Localities	Municipality	Increase (Persons)
3038	Keilor Downs, Keilor Lodge, Taylors Lakes	Brimbank/ Melton	10074
3037	Delahey, Hillside, Sydenham, Keilor North, Taylors Hill	Melton/ Brimbank	8857
3030	Werribee, Werribee South, Point Cook, Sanctuary Lakes, Derrimut	Wyndham	6274
3029	Hoppers Crossing, Truganina, Tarneit	Wyndham	5858
3028	Altona Meadows, Laverton, Seabrook	Hobsons Bay / Wyndham	4862

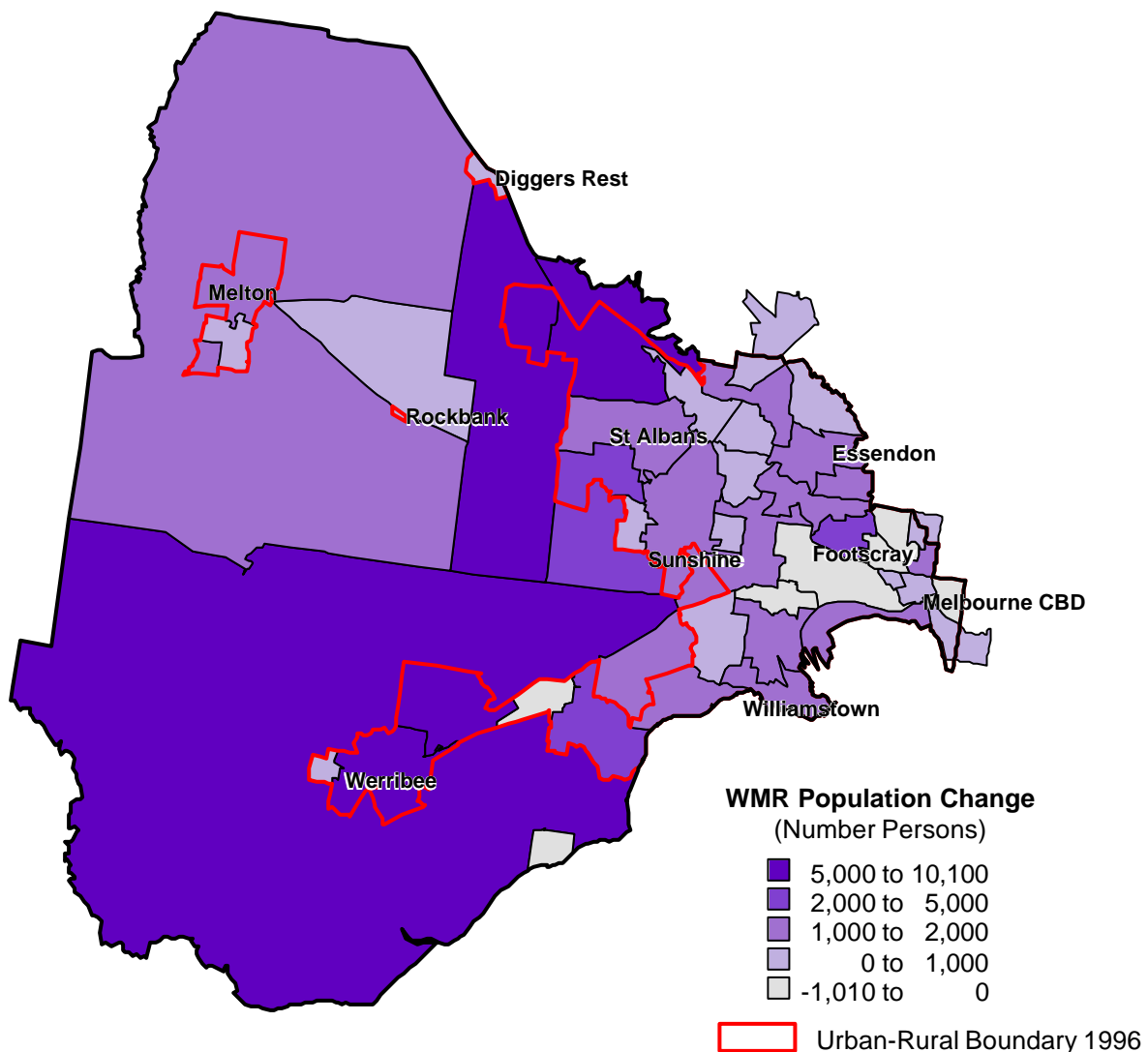
⁴ Source: ABS 1991 and 1996 Census, ABS 1999 and 2000 Estimated Resident Population

⁵ Source: ABS 1996 Census, ABS 2000 Estimated Resident Population.

These are five of the top ten fastest growing postcodes in Victoria. The fastest growing postcode is 3805 (Fountain Gate/Narre Warren). The 3003 and 3006 postcodes near the Central Business District have also grown rapidly in percentage terms, but do not have the weight of numbers of other postcodes. Some areas of Footscray (3011), Yarraville (3013), Parkville (3052), and the RAAF base at Point Cook (3027) have lost small numbers of people.

Between 1999 and 2000 the municipalities of Melton and Wyndham had two of the highest population growth rates in Melbourne (9.6% and 4% respectively). This compares to a growth rate of 2.4% for the Western Region and 1.5% for Melbourne overall.

Population Change 1996 to 2000⁶

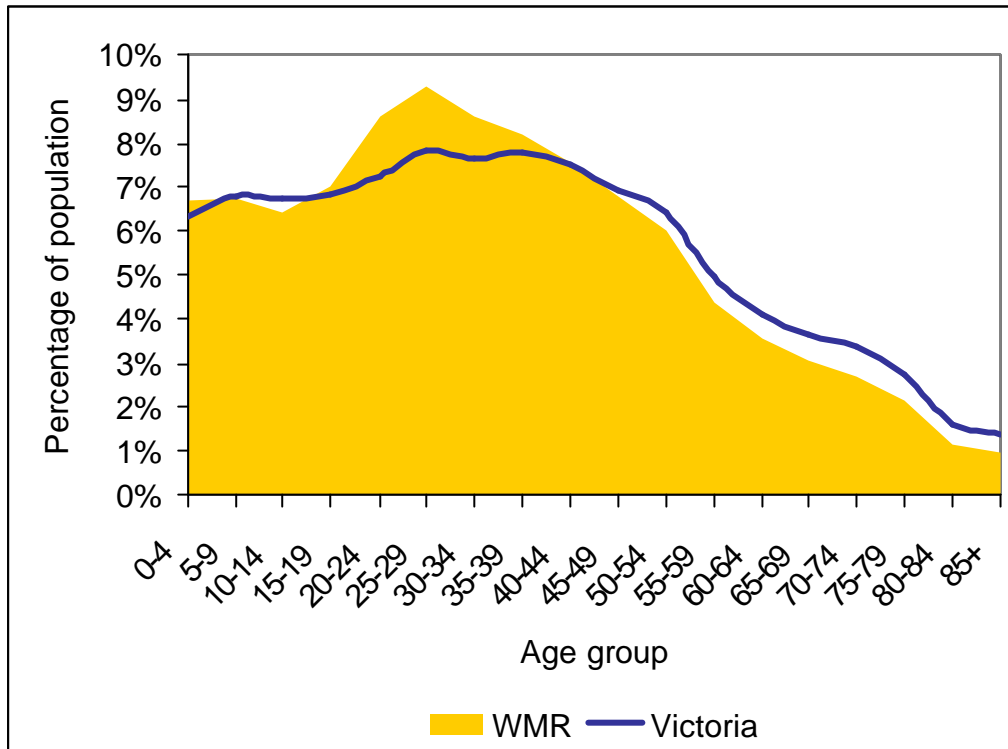


⁶ Source: ABS 1996 Census, ABS 2000 Estimated Resident Population.

Western Region Population Age Profile

The population age profile below shows the WMR population compared to the Victorian population as a whole.

Western Region Population Age Profile⁷



The Region varies from the State profile in terms of 0-19 years olds, but has a higher proportion of 20-39 years olds. Many of these people would represent young families. Conversely, the Region has fewer people over the age of fifty, although the profile mirrors that of the state but at lower percentages.

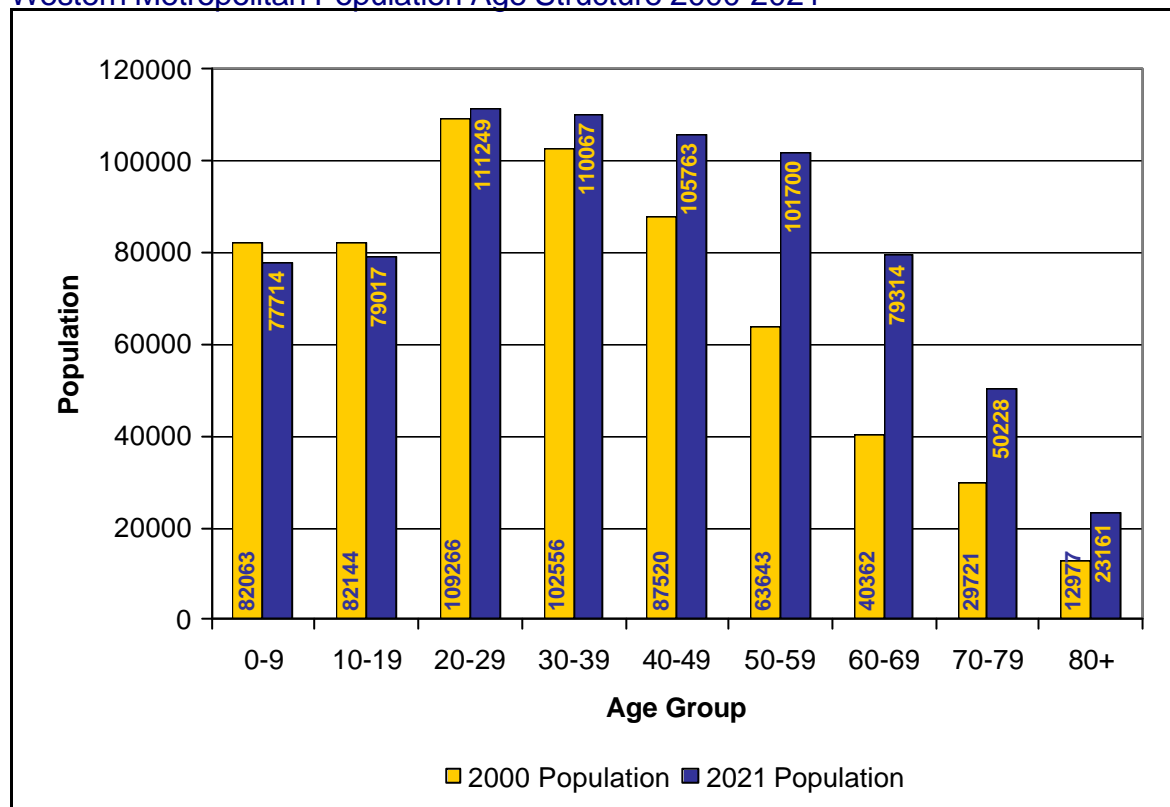
However, the Regional overview conceals marked differences between the lifestage groups across the Region. The established communities of Hobsons Bay, Maribyrnong and Moonee Valley have lower proportions of young people and higher proportions of older persons, while the newer communities of Melton and Wyndham have a much younger population, as does Brimbank.

In general, this data indicates that the Western Metropolitan Region has two distinct lifestage profiles. The first (the municipalities of Melton, Wyndham, and Brimbank) is composed of families with children and young people, while in other municipalities (Moonee Valley, Hobsons Bay, and Maribyrnong) older persons are more prevalent.

⁷ Source: ABS 2000 Estimated Resident Population.

Another observation is the inevitable ageing of the population over the next 20 years. For example, the number of people aged 60 and over is expected to almost double between 2000 and 2021, and in 2021 this age group will make up 20% of the population. In considering the aging population it is also necessary to reflect on the drop in the number of young people, due to decreasing fertility rates. These population age trends are in line with trends for Victoria and Australia. By 2021 there will be fewer children and greater numbers of middle aged and older persons.⁸ The below graph shows how the age structure of the population is predicted to change in twenty years.

Western Metropolitan Population Age Structure 2000-2021⁹



The change in population structure will have an impact on future planning of services. For example, a population with large numbers of people in the oldest age groups means that there will be higher rates of ill health and more need for aged care services.

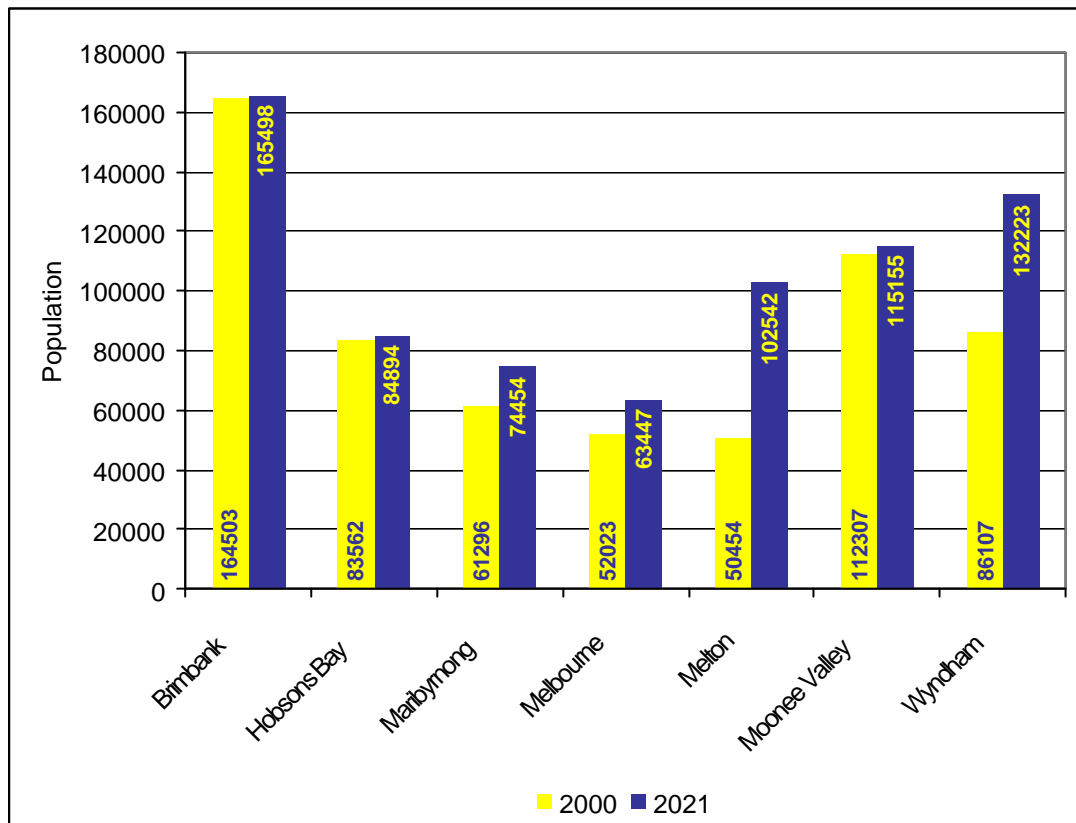
⁸ Source: DoI 2000, Victoria In Future

⁹ Source: ABS 2000 Estimated Resident Population, DoI 2000 Population Projections

Population Projections

This next figure shows Department of Infrastructure population projections for 2021 for the WMR’s seven municipalities, compared to the 2000 ABS Estimated Resident Population.

Projected Population Change, 2000-2021¹⁰



The LGAs with the largest expected population growth over the period are Wyndham and Melton, increasing by approximately 50,000 people each. These two municipalities have already experienced significant population growth since 1991 – both Melton and Wyndham have had average annual percentage population increases of almost 5% since 1991¹¹. Melbourne’s population growth over this time has averaged just over 1% annually.

Brimbank is still expected to have the largest population, although it will not grow much more. In terms of population this would make it the one of the five largest Local Government Areas in Victoria. The established municipalities of Hobsons Bay, Maribyrnong and Moonee Valley are not expected to undergo much population increase and in some cases may decrease.

¹⁰ Source: DoI 2000 Population Projections, ABS 2000 Estimated Resident Population

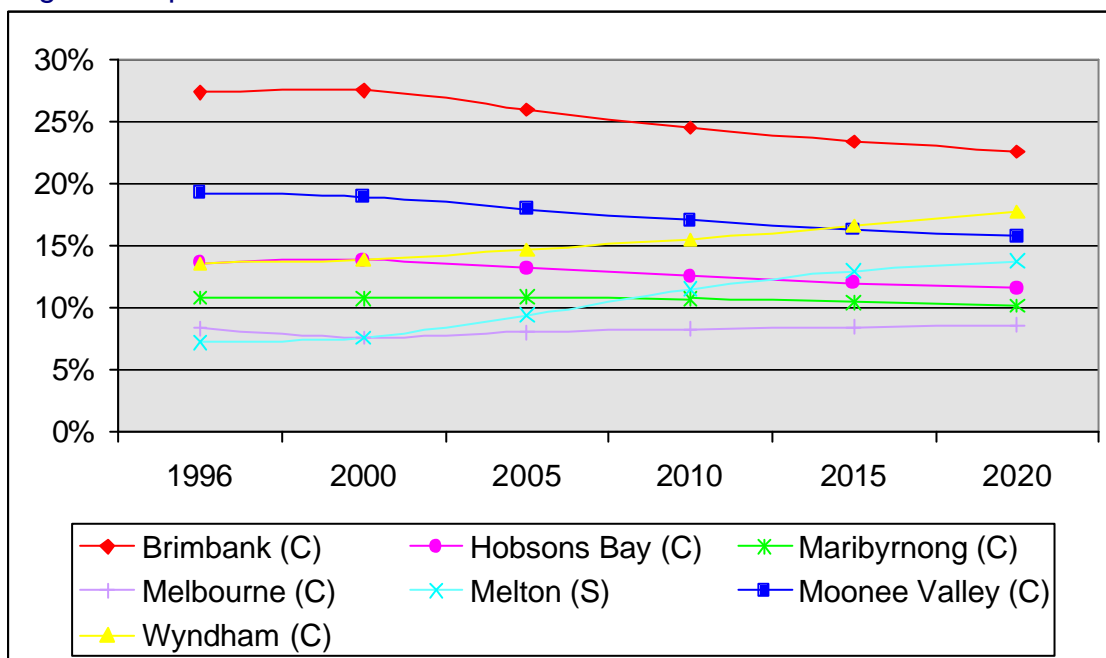
¹¹ Source: Grace & Shield 1999

Population Share Between Municipalities

At the 1996 Census there was considerable disparity between the population share of each municipality. Brimbank, by virtue of its size and highly urbanized nature¹², had the largest share of the population, with one hundred and fifty thousand people. Moonee Valley was a distant second with one hundred thousand, while Hobson’s Bay and Wyndham were a step smaller again in the low seventies.

However, the Department of Infrastructure projections suggest that by 2020 the share of population across the Region will even out. During this time Melton’s population will double. Some time between 2010 and 2015 Wyndham will overtake Moonee Valley as the second most populous municipality, and the difference between the largest municipality and the smallest will decrease. To illustrate this, in 1996 Brimbank was 3.8 times larger than Melton, but by 2020 it will only be 1.6 times larger. Understanding the balance between municipalities in the Region is an important part of allocating resources of a fair and equitable basis.

Regional Population Share 1996-2020¹³



¹² Despite being on the urban fringe, the majority of Brimbank’s land has already been developed, with fewer ‘greenfield sites’ available for development than previously. By contrast, Melton and Wyndham have large expanses available for development.

¹³ Source: ABS 1996 Census; Department of Infrastructure population projections from Victoria in Future (2000 edition)

Transport

Availability of public transport varies across the region. The inner suburbs are well served by a mixture of trains, trams and buses whilst communities in the outer suburbs are more reliant on private transport. Public transport (particularly train and tram services) tends to radiate out from the CBD, making it difficult to cross the region efficiently.

Metropolitan rail lines in the west are to: Werribee, Williamstown, Sunshine, Sydenham and Broadmeadows. Rail transport for the outer suburbs (Melton, Rockbank, Deer Park, Diggers Rest) is a V/Line service. This means that public transport to the outer suburbs can be inconvenient as trains are not as frequent as the metropolitan lines, and stations may be located some distance from residences. For example the service at Melton is a V/Line service and not close to the majority of the population.

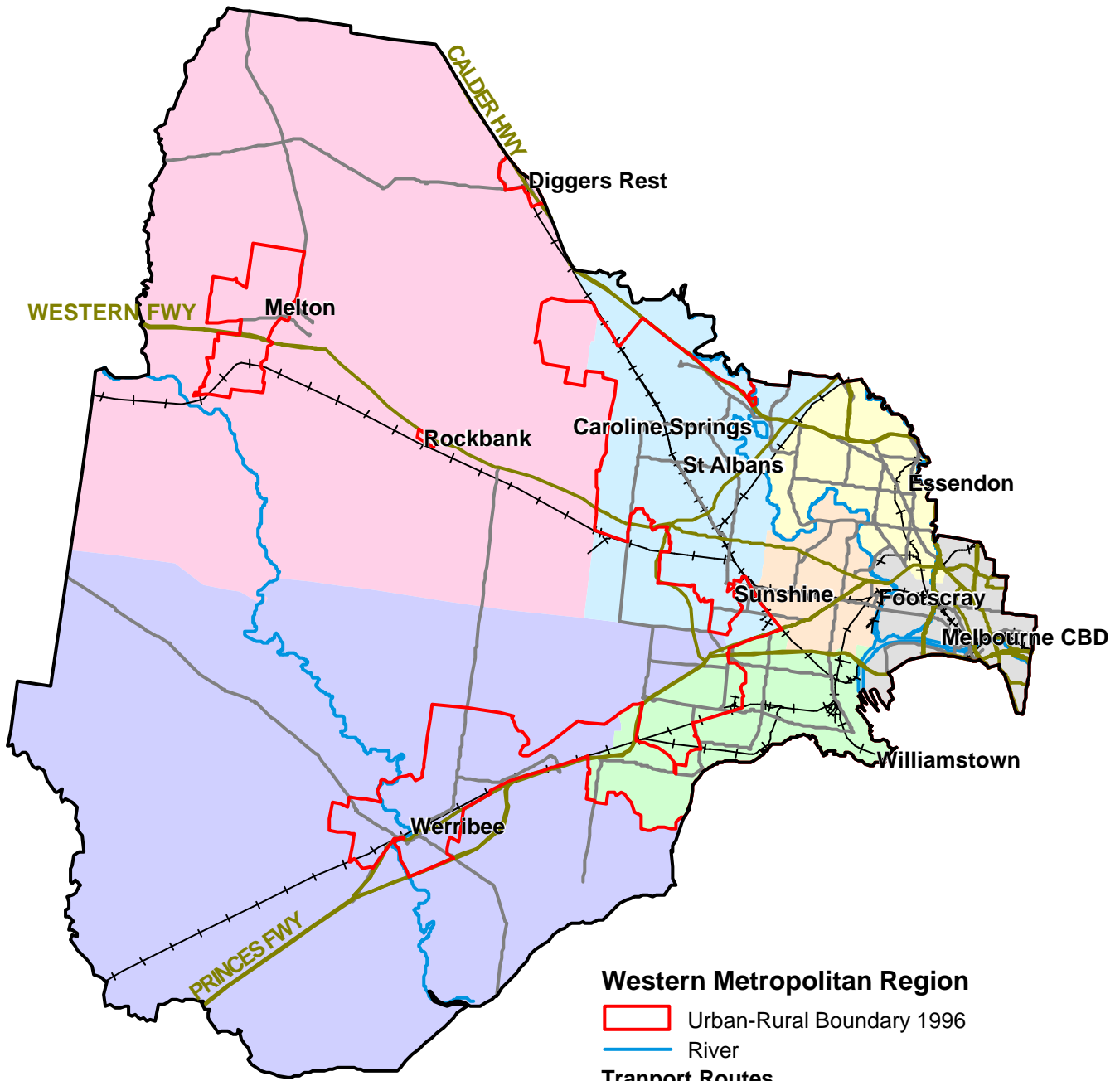
Several tram lines run within the inner Western region – these tramlines are 57 (City to West Maribyrnong, via North Melbourne), 59 (City to Airport West) and 82 (Footscray to Moonee Ponds). Numerous bus lines also cross the Region, and Footscray forms a public transport hub with interchanges for all three modes of transport.

Private transport for outer areas of the Region is effective, with car-owners in Melton and Werribee served by the Western and Princes Highways respectively. Diggers Rest is located on the Calder Highway, which forms the northern boundary of the Region, and its residents are close to services in the major town of Sunbury.

Within the inner urban areas the Western Ring Road links the three highways already mentioned with the Tullamarine Freeway and with the north-eastern suburbs, and a variety of main roads facilitate movement.

The map on the next page shows the highways, major roads and railway lines in the Western Metropolitan Region.

Western Metropolitan Region



Western Metropolitan Region

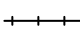
 Urban-Rural Boundary 1996

 River

Transport Routes

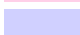
 Highway

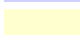
 Main Road

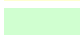
 Railway

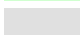
Local Government Areas

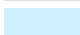
 Shire of Melton


 City of Wyndham

 City of Moonee Valley

 City of Hobsons Bay

 City of Melbourne

 City of Brimbank

 City of Maribyrnong

Indigenous Communities

At the last Census about 0.36% of the Western Region's population identified themselves as having an Aboriginal and/or Torres Strait Islander background.

Prior to European Settlement

Prior to European settlement three clans lived in the western parts of what is now Melbourne. The Marin.balluk lived between the Maribyrnong River and Kororoit Creek, and as far north as Sunbury¹⁴. The Kurung.jang.balluk lived between Kororoit Creek and the Werribee River, while the Yallukit.willam lived closer to the Bay in southern parts of Werribee, Altona, Sunshine, Williamstown, and Footscray. Current responsibility for indigenous cultural heritage rests with the Wurundjeri tribe.

The indigenous ecosystem over much of the West was grassland, populated with wildlife well adapted to life in it. The Derrimut Grassland Reserve is a remnant example of this type of vegetation. Animals found included small marsupials (for example, dunnarts and other marsupial mice), reptiles (the striped legless lizard), and predatory birds such as the wedge-tailed eagle. However, while all of these can still be found in the West, many species are now endangered.

The Indigenous Community Today

Number of Aboriginal & Torres Strait Islanders in the WMR, 1996¹⁵

	Aboriginal Persons	Torres Strait Islander persons	Both Aboriginal & Torres Str Is persons ¹⁶	Total ATSI Persons	% of Total Population	% of Australian- Born Population
Brimbank	319	120	36	475	0.32%	0.60%
Hobsons Bay	226	58	7	291	0.39%	0.60%
Maribyrnong	203	42	3	248	0.42%	0.82%
City of Melbourne	152	16	7	175	0.36%	0.70%
Melton	134	18	6	158	0.40%	0.52%
Moonee Valley	213	43	4	260	0.25%	0.37%
Wyndham	298	44	23	365	0.49%	0.68%
Western Region	1545	341	86	1972	0.36%	0.59%
Victoria	18377	2519	552	21448	0.49%	0.68%

¹⁴ Boundaries such as these were social in nature and should be regarded as approximate (Presland 1994).

¹⁵ Source: ABS 1996 Census

¹⁶ Persons may report that they have both Aboriginal and Torres Strait Islander background on the Census form.

As a proportion of the total population, WMR's indigenous community is strongest in the City of Wyndham, although Brimbank contains the greatest number of persons reporting indigenous heritage, and Torres Strait Islanders are particularly well represented. However, the WMR has a smaller proportion of Aboriginal & Torres Strait Islander persons than Victoria as a whole.

This information relies on Census data, and it should be remembered that some quarters of the Aboriginal and Torres Strait Islander community do not believe that the ABS population counts are accurate.

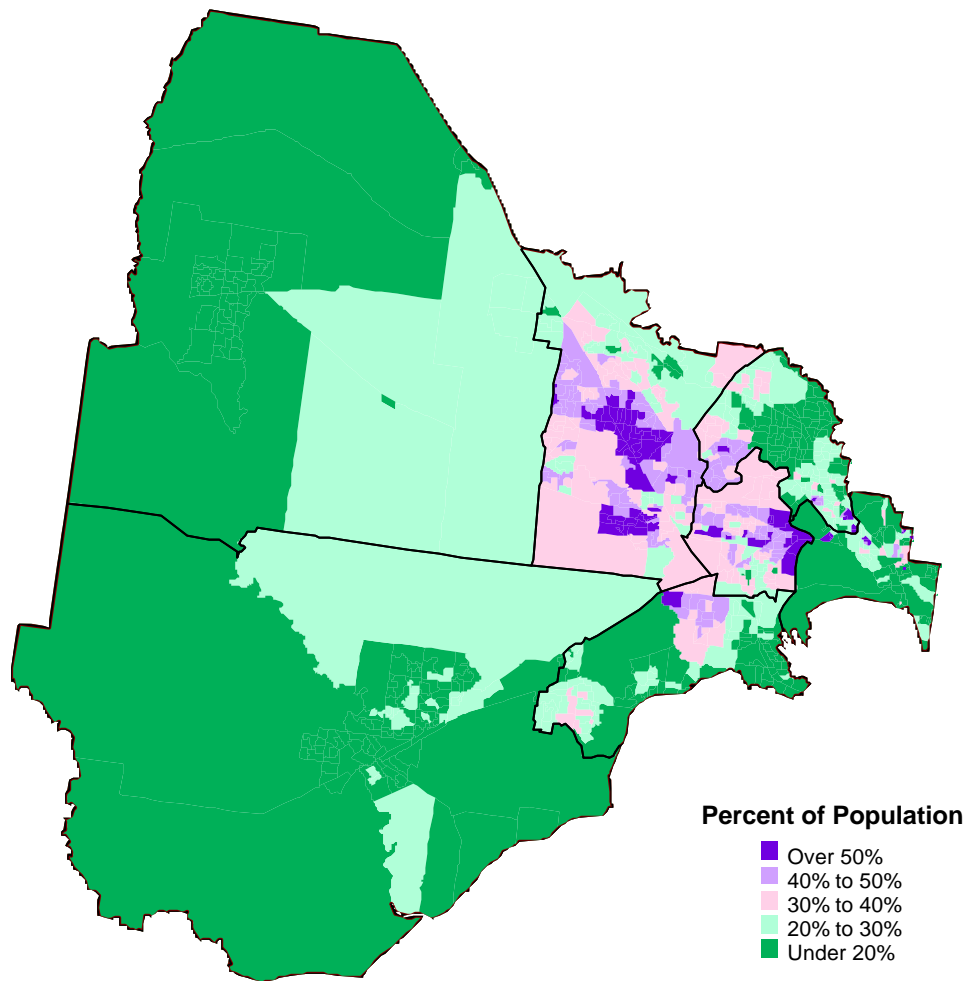
However, the Census is the most comprehensive source of demographic data on Aboriginal and Torres Strait Islander populations for small areas.¹⁷

¹⁷ Source: Census of Population and Housing: ABS Views on Content and Procedures, ABS, 1998

Culturally and Linguistically Diverse Communities

Culturally and linguistically diverse (CALD) communities constitute over 30 per cent of the total population of persons 15 years and older in the WMR, although the exact figure depends on which definition is used. 34% of the population were not born in Australia, while 36% speak a language other than English at home.

Percent of Population Born Overseas (Non-English Speaking Countries)¹⁸



In terms of size the most important non-English speaking background communities are those from the former Yugoslavia¹⁹, Vietnam, Italy, Malta, and Greece. Numerically smaller CALD communities include the Filipino, Polish, German, Chinese, Indian, Malaysian, and Lebanese populations. In Brimbank nearly 70% of people aged 70 and over were born overseas.

¹⁸ Source: ABS 1996 Census (excludes people born in Canada, Ireland, New Zealand, South Africa, UK and USA)

¹⁹ Communities from the former Yugoslavia include the Serbian, Croatian, Bosnia- Herzegovina, Albanian and Macedonian communities who in the 1996 Census identified as Former Yugoslavia in response to the Country of Birth request.

Country of Birth

As the below table indicates, the country of birth profile for the Region differs from Victoria. A higher proportion of the region's population were born overseas (33.9%) compared to Victoria's population (23.8%). In particular, 28% of the region's population were born in predominantly non-English speaking countries compared to only 17% of Victoria's population. For example, people originating from Vietnam, Italy, Malta and Greece account for 12% of the West's population but only 5% of Victoria's population.

Top Ten Countries of Birth in the Region and Victoria²⁰

Rank	Western Metropolitan Region		Victoria	
1	Vietnam	4.43%	United Kingdom	4.98%
2	United Kingdom	3.98%	Italy	2.17%
3	Italy	3.44%	Greece	1.40%
4	Malta	2.40%	Vietnam	1.05%
5	Greece	1.56%	New Zealand	0.97%
6	Philippines	1.26%	Germany, FR of	0.67%
7	Macedonia FYR	1.19%	China	0.64%
8	Croatia	1.06%	Netherlands	0.60%
9	New Zealand	0.92%	Sri Lanka	0.55%
10	Poland	0.83%	India	0.54%
	Other ²¹	6.83%	Other	5.36%
	Born elsewhere ²²	5.98%	Born elsewhere	4.17%
	Total born NESCS²³	28.3%	Total born NESCS	17.0%
	Total born overseas²⁴	33.9%	Total born overseas	23.8%

Language Spoken at Home

Language spoken at home is usually a reliable indicator of an individual's cultural background. In the Western Region a greater proportion of those born overseas speak their native language at home than in the Victorian community as a whole. Furthermore, given that more people speak Italian at home than were born there (6.0%, with only 3.4% of the population born in Italy), it appears that second and third generation migrants are continuing to speak languages other than English in the home. The following table provides information about the major languages spoken in the West.

²⁰ Source: ABS 1996 Census.

²¹ Includes the 19 remaining major countries of the ABS Classification of Countries.

²² Includes all remaining minor countries, but excludes the 'Not Stated' response.

²³ Non-English Speaking Countries (excludes Canada, Ireland, South Africa, UK, USA, New Zealand)

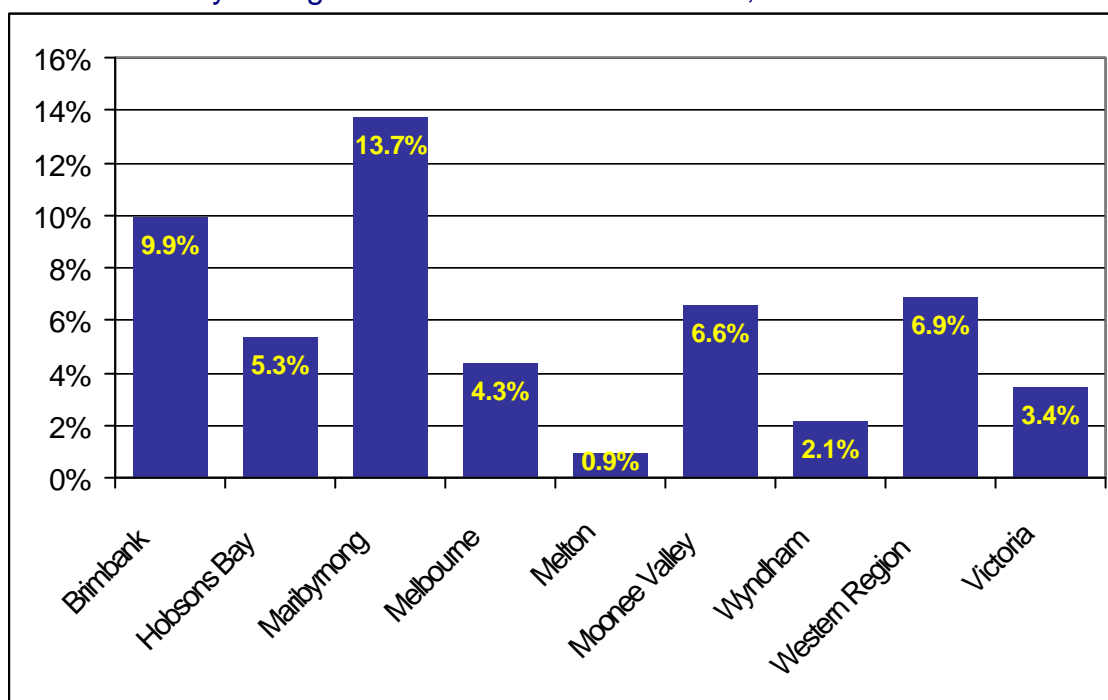
²⁴ Total population minus Australian born.

Major Languages Spoken in the West²⁵

	English only	Italian	Vietnamese	Greek	Chinese	Maltese	Total LOTE ²⁶
Brimbank	42.9%	5.6%	7.1%	4.9%	3.0%	7.1%	54.1%
Hobsons Bay	66.2%	5.2%	2.1%	3.8%	1.5%	3.1%	30.9%
Maribyrnong	47.2%	4.5%	13.8%	4.5%	5.8%	0.6%	47.5%
Melbourne	58.2%	2.1%	2.6%	0.9%	7.5%	0.3%	23.2%
Melton	86.4%	1.5%	0.2%	0.8%	0.4%	2.3%	11.6%
Moonee Valley	63.8%	12.0%	2.1%	4.1%	3.6%	1.0%	33.4%
Wyndham	78.1%	5.2%	0.5%	0.9%	1.0%	1.4%	18.6%
Western Region	59.6%	6.0%	4.4%	3.4%	3.2%	3.0%	35.8%
Victoria	76.5%	3.8%	1.2%	2.9%	2.2%	0.6%	20.1%

Proficiency in English

At the 1996 Census at least 6.9% of the Region's total population²⁷ spoke English 'not well' or 'not at all'. The need for support from interpreting and translation services has been identified as an issue within the Region.

Poor Proficiency in English of Persons Born Overseas, 1996²⁸

Since the Census, an additional 12,350 migrants have arrived in the Region²⁹. Of these migrants, almost half (43.5%) stated they had poor or no proficiency in English. A further 25% did not state their proficiency in English.

²⁵ Source: ABS 1996 Census.

²⁶ Language Other Than English

²⁷ Includes only those born overseas, and **not** Australian-born persons with language difficulties.

²⁸ Source: ABS 1996 Census. Percent speaking English 'not well' or 'not at all'.

²⁹ Source: DIMA settlement database, arrivals from 06/08/96 to 21/02/2001

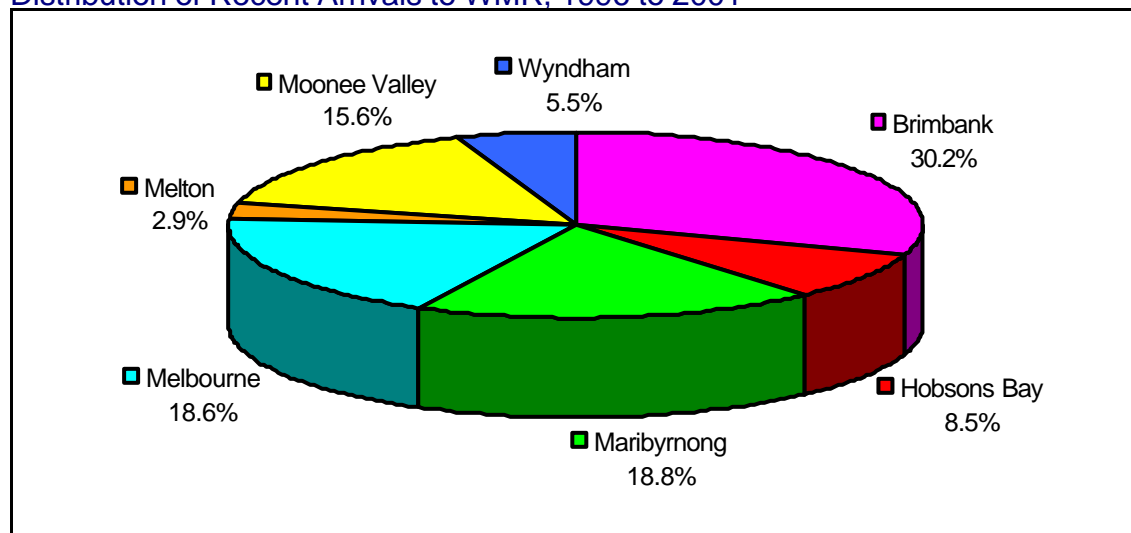
English proficiency varies with age and gender: females who speak a language other than English at home are more likely than males to have poor English proficiency. Females aged 65 and over have the lowest levels of English proficiency. In the Western region, 19.9% of persons (23% of females and 17% of males) who speak a language other than English at home have poor English proficiency. When considering older persons aged 65 and over, speaking a language other than English at home, 42.6% percent (38.1% of males and 46.5% of females) had poor English proficiency.³⁰

This is consistent with Australian trends – there is a large increase in poor English proficiency for people aged 65 and over compared to younger age groups. This may be due to the fact that most would be out of the work force by 65 and not speaking English regularly.³¹ In addition, “language regression” in old age (loss of a second language, in this case English), is a commonly cited occurrence. The issue of poor English proficiency in older persons is also complicated by the fact that some migrants, especially women, never achieve an adequate command of English. Lack of proficiency in English can be an obstacle to accessing public and community support services, particularly for older age groups.³² With an aging population, this trend of older persons, for whom English is a second language, having poor English proficiency is likely to continue.

Recent Migrants and Refugees

A total of 12,350 migrants have settled in the WMR since 1996. This represents almost 20% of all migrants to Victoria. Within the WMR, the majority of arrivals have been to the City of Brimbank.

Distribution of Recent Arrivals to WMR, 1996 to 2001³³



³⁰ Source: ABS 1996 Census

³¹ Source: DIMA 2001, Statistical Report No. 30

³² Australian Psychological Society 2000.

³³ Source: DIMA settlement database, arrivals from 06/08/1996 to 21/02/2001

Recently arrived migrants include a number of refugees from the Horn of Africa (Somalia, Ethiopia, Eritrea, and the Sudan), the former Yugoslavia (including Croatia, Serbia, and Bosnia-Herzegovina), and Iraq. Research informs us that new immigrants have specific needs and refugees have particular needs arising from the experiences of trauma and displacement.

Migration Category of Recent Arrivals by LGA, 1996 to 2001³⁴

	Family Stream	Skilled Stream	Special Eligibility	Humanitarian Program	Total
Brimbank	1760	659	17	1298	3734
Hobsons Bay	571	205	8	264	1048
Maribyrnong	1181	283	3	850	2317
City of Melbourne	526	1422	12	332	2292
Melton	183	135	5	40	363
Moonee Valley	865	387	17	653	1922
Wyndham	285	248	8	133	674
Western Region	5371	3339	70	3570	12350

- **Family Stream:** settlers sponsored by a relative who is an Australian Citizen or a permanent resident of Australia.
- **Skill Stream:** settlers with particular occupational or business skills or outstanding talents for which there is demand in Australia.
- **Special Eligibility:** category for other types of arrivals not included in Family or Skilled streams e.g. former resident/citizen of Australia.
- **Humanitarian Program:** consists of the **Refugee** and **Special Humanitarian Programs (SHP)**, for people who have suffered persecution or gross violation of human rights in their home country, and the **Special Assistance Category (SAC)** for persons at need who do not fit within other humanitarian categories.

Almost 30% of recent settlers to the Western Region have come through the Humanitarian Program. In comparison, less than 20% of migrants coming to Victoria are through the Humanitarian Program. The majority of these Humanitarian settlers to WRM have come from Former Yugoslavia and Horn of Africa countries (75%). Another 7% have come from the Middle East (mainly Iran and Iraq) and Afghanistan.

³⁴ Source: DIMA settlement database, arrivals from 06/08/1996 to 21/02/2001

Former Yugoslavia and Horn of Africa Humanitarian Arrivals (Refugee/SHP/SAC) by Country of Origin, 1996-2001³⁵

	Former Yugoslavia					Horn of Africa				
	Bosnia- Herzegovina	Croatia	FYR of Serbia & Montenegro	Former Yugoslavia, nfd ³⁶	Subtotal	Eritrea	Ethiopia	Somalia	Sudan	Subtotal
Brimbank	377	133	26	443	979	2	20	10	24	56
Hobsons Bay	72	41	1	69	183	0	11	1	8	20
Maribyrnong	118	60	3	121	302	23	118	51	72	264
Melbourne	14	0	0	8	22	78	7	148	36	269
Melton	11	2	0	21	34	0	0	1	0	1
Moonee Valley	47	9	1	74	131	57	70	126	89	342
Wyndham	14	0	2	25	41	0	8	5	0	13
Western Region	653	245	33	761	1692	160	234	342	229	965

The WMR has received almost half of all arrivals to Victoria from Horn of Africa. Of those settling in the WMR, 90% have gone to the Cities of Maribyrnong, Melbourne and Moonee Valley. The WMR has received one third of all the arrivals to Victoria from Former Yugoslavia. Of those settling in WMR, over 50% have gone to the City of Brimbank.

Cultural Diversity and Socio-economic Status.

Economically some CALD communities are disadvantaged. Those with the highest rate of income earning adults (IEAs) with incomes less than \$300 week³⁷ (ie: the working poor) are the Vietnamese (67% of IEAs earning less than \$300 per week); the Italian, Polish, and Chinese³⁸ (both on 66%); the Greek community (65%); the Maltese (61%); and those from the former Yugoslavia (55%). This compares to a rate of 47% of IEAs born in Australia earning less than \$300 per week. Evidence shows complexity and diversity of CALD communities and a growing disadvantage within communities.

³⁵Source: DIMA settlement database. These humanitarian categories account for approximately 85% of arrivals from Former Yugoslavia and 70% from Horn of Africa

³⁶ Former Yugoslavia, not further defined

³⁷ Source: ABS 1996 Census

³⁸ Not including Taiwan and Hong Kong.

Health Status

The Victorian Burden of Disease Study forms the basis of health status surveillance in the Region.³⁹ This study estimates the overall placed on the community by disease and injury (both mortality and morbidity) and creates a single unit of measure for diseases, injuries, and risk factors by age group at municipality level. This unit of measure is called a Disability Adjusted Life Year, or DALY. One DALY equals one lost year of healthy life, or the number of years lived at less than full health added to the number of years of life lost to that disease through premature death.⁴⁰ Presented below are life expectancy and DALY data for the Western Region.

Life Expectancy

The table and map below show that in the LGAs of Maribyrnong, Melbourne, Hobsons Bay and Brimbank the life expectancy of males is below the Victorian state average, whilst the life expectancy of females in Melbourne is higher. Clearly the health status of men in Maribyrnong is well below that of the state average.

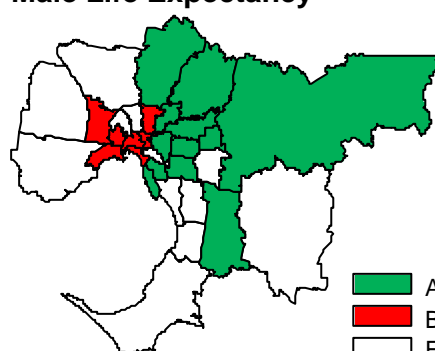
Life Expectancy at Birth by Gender, 1992-96⁴¹

	Males	Females	Persons
Brimbank	74.9	81.1	78.0
Hobsons Bay	74.6	81.5	78.1
Maribyrnong	72.9	80.6	76.8
Melbourne	73.8	82.9	78.4
Melton	75.5	80.8	78.2
Moonee Valley	75.7	81.8	78.8
Wyndham	75.3	81.5	78.4
Western Region	74.7	81.5	78.1
Victoria	75.6	81.4	78.5

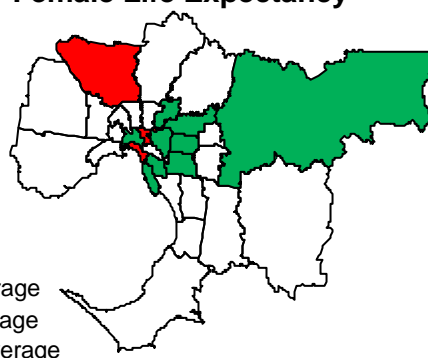
Green: life expectancy significantly higher than the State average

Red: life expectancy significantly lower than the State average

Male Life Expectancy



Female Life Expectancy



³⁹ Further information is available on the Burden of Disease website: <http://hn01.dhs.vic.gov.au/bodw/>

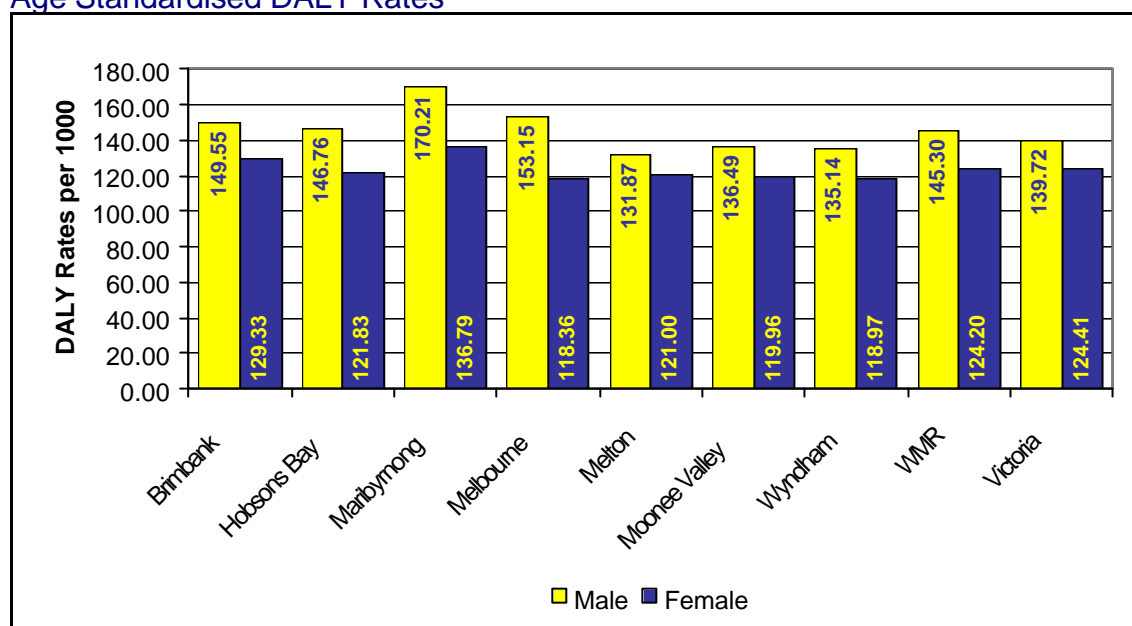
⁴⁰ DALYs = YLL (Years of Life Lost) + YLD (Years Lived with Disability)

⁴¹ Source: Victorian Burden of Disease Study 1999

Disability Adjusted Life Years

The DALY (Disability Adjusted Life Year) is a single measure of both morbidity and mortality. One DALY equals one lost year of healthy life. The following graph shows age standardised DALY rates per 1000 population – the higher the DALY rate is for an area, the worse its health status is.

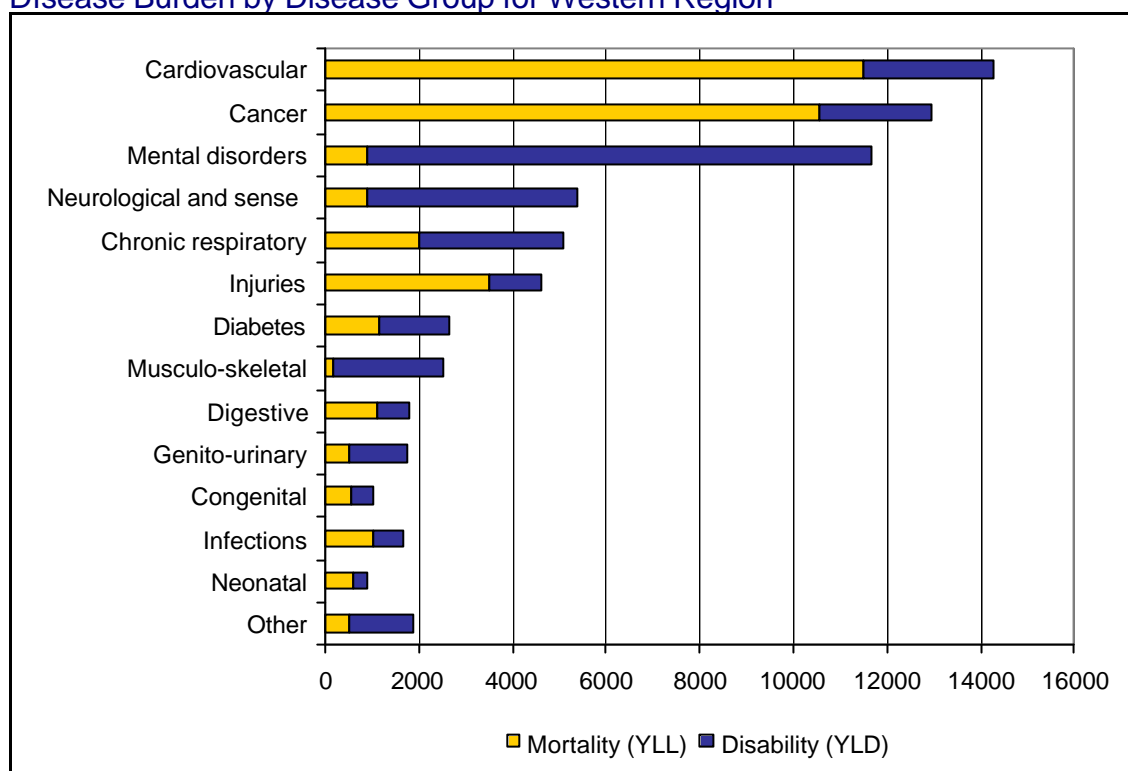
Age Standardised DALY Rates⁴²



Geographically, the health of Maribyrnong's population is cause for concern, with both men and women having greater number of years lost to ill health and premature death than the Victorian norm. Brimbank, Hobsons Bay and Melbourne also have DALY rates above the Victorian figure for males, and these four municipalities together contribute to the overall higher rate of poor health for men in the Western Metropolitan Region. Some of the municipalities have lower DALY rates than the Victorian rate, and this can be seen for women in Wyndham, Moonee Valley and Melbourne.

Cardiovascular disease, cancer and mental disorders are the leading causes of the health burden in the Western Region. Maribyrnong has amongst the highest DALY rates for Victoria for these three disease groupings. The poor health status of males in the region is largely due to the higher rates of cardiovascular disease, cancer and mental disorders. The region has below average cancer DALY rates for women. The following graph shows the contribution of different disease groups to the health burden of the region.

⁴² Source: Victorian Burden of Disease Study 1999

Disease Burden by Disease Group for Western Region⁴³

The major specific causes of the disease burden on our population are shown below for both genders. Ischaemic heart disease is by far the leading issue, accounting for 12% of the disease burden, while stroke, depression, chronic obstructive pulmonary disease, diabetes, and lung cancer account for four or five per cent each.

Top Ten Individual Burden-Causing Conditions, 1996⁴⁴

Rank	Condition	DALYs	%of burden
1	Ischaemic heart disease	8295	12%
2	Stroke	3234	5%
3	Depression	3165	5%
4	Chronic obstructive pulmonary disease ⁴⁵	2658	4%
5	Diabetes mellitus	2644	4%
6	Cancer of the lung	2573	4%
7	Asthma	2133	3%
8	Dementia	2009	3%
9	Cancer of the colon & rectum	1766	3%
10	Osteoarthritis	1663	2%

⁴³ Source: Victorian Burden of Disease Study 1999

⁴⁴ Source: Victorian Burden of Disease Study 1999

⁴⁵ Chronic obstructive pulmonary disease is largely made up of the tobacco related conditions emphysema and chronic bronchitis.

Issues for the Future

By 2016, the projected changes to the ranking order of the top 10 Disease Groupings in years of life lost are that cancers will become the leading disease group, neuro-psychiatric disorders will rise, and diabetes mellitus will also rise. Projected changes to the ranking order of the top 10 diseases will be that ischaemic heart disease will remain the leading single cause of years of life lost in both males and females. Lung cancer is likely to fall in men but rise considerably in women, and within the neuro-psychiatric group, dementia will increase for women, as will drug abuse for men.

Socio-Economic Factors

The Western Metropolitan Region is an area of socio-economic diversity, with areas of relative advantage (for example Williamstown and Essendon) and areas of great disadvantage (for example Braybrook). Overall, it is more socio-economically disadvantaged than other regions. For example, the Western Region scores lowest on the ABS Index of Relative Socio-Economic Disadvantage (IRSED) when compared to other DHS regions. There are large proportions of the populations on low incomes and dependent on benefits and pensions. The West also contains the postcode claimed by Unequal in Life to be the most disadvantaged in Victoria. This postcode (Braybrook) also rates poorly for a number of other indicators of disadvantage.

Socio-Economic Disadvantage

The standard measure of socio-economic disadvantage is the ABS Index of Relative Socio-Economic Disadvantage (IRSED). IRSED uses twenty Census indicators to rank geographic areas in terms of their socio-economic status. Each geographic area is standardised against a national benchmark of 1000, with a standard deviation of 100⁴⁶. IRSED is used for comparing different areas: the lower the score, the higher the relative level of disadvantage compared to the national average. The table below shows the 1996 score and the change in score from the 1991 Census. A change in a municipality's score does not mean that it has necessarily become more or less disadvantaged - it merely means that it has changed relative to other areas within Australia.

Index of Relative Socio-Economic Disadvantage 1991-1996

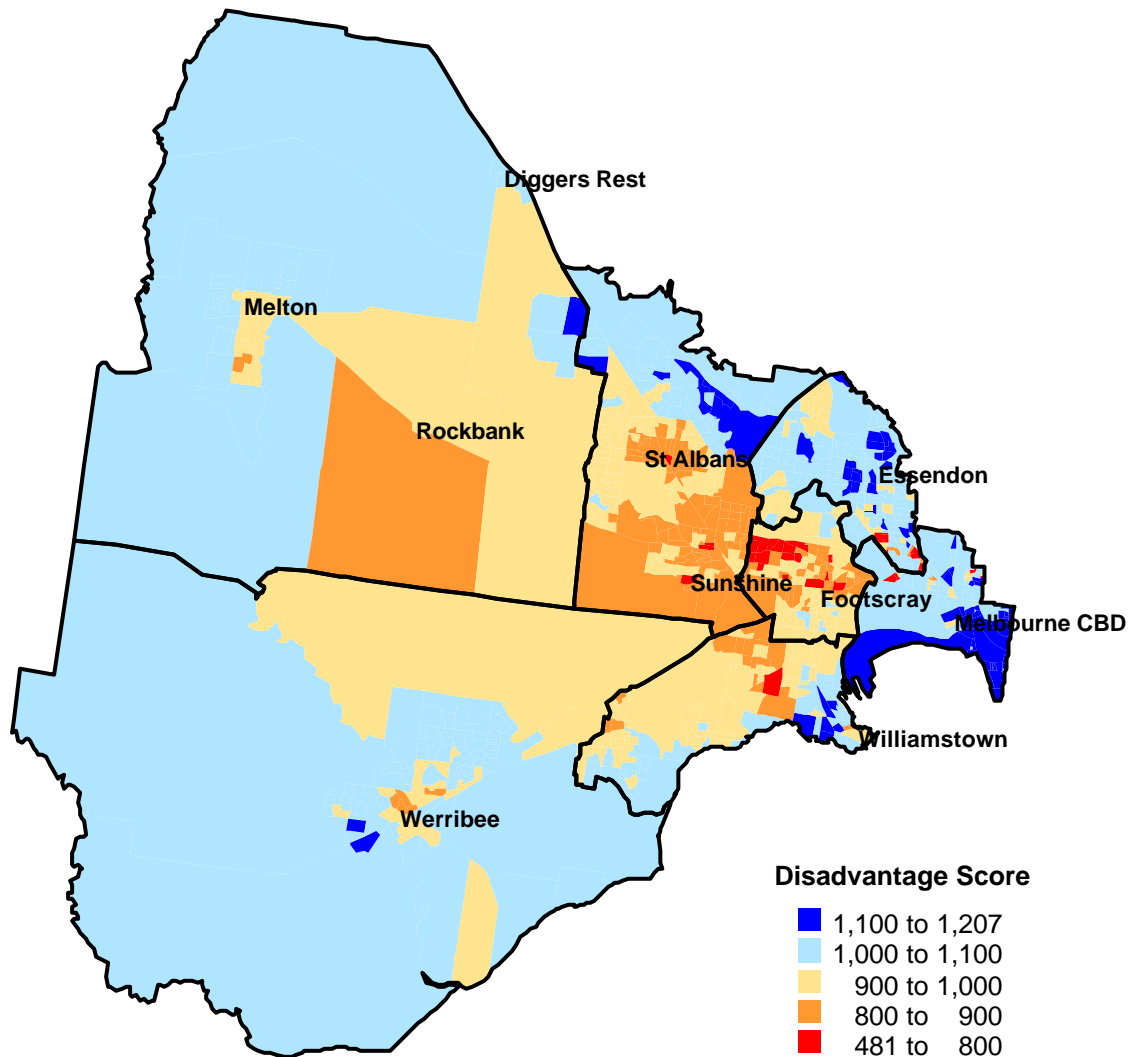
Local Government Area	1991	1996	Change
Brimbank	995.86	946.39	-49.47
Hobsons Bay	994.16	979.50	-14.66
Maribyrnong	879.58	887.68	8.10
City of Melbourne	936.75	1035.38	98.63
Melton	1044.67	1008.50	-36.17
Moonee Valley	997.81	1011.76	13.95
Wyndham	1057.81	1024.86	-32.95
Western Region ⁴⁷	986.88	979.42	-7.46
Melbourne Statistical Division	1000.93	1024.84	23.91
Victoria	N/A	1015.96	N/A

⁴⁶ Statistically, this means that with a normal (or bell-shaped) distribution, 68% of municipalities in Australia have scores between 900 and 1100, while 95% have scores between 800 and 1200 and 99% have scores between 700 and 1300.

⁴⁷ IRSED values for regions will vary depending on which geographic unit was used to provide the average value. Averaging LGA values in a Region may mask some disadvantaged pockets.

The previous table shows that for the WMR there has been an increase in relative disadvantage from 1991 to 1996 with the regional score (979.42) remaining below that of the MSD⁴⁸ (1024.84). Within the region, Melbourne has enjoyed a gain in socio-economic advantage, possibly related to CBD property developments under way and the relocation of a number of accommodation options for disadvantaged or vulnerable members of the community. The following map shows the disadvantaged/advantaged areas across the region.

Index of Relative Socio-Economic Disadvantage (IRSED)⁴⁹



Explanation of IRSED

Relatively disadvantaged areas have low index values (red).
 Relatively advantaged areas have high index values (blue).
 Australian average index value is 1000.

⁴⁸ Melbourne Statistical Division (essentially equal to Metropolitan Melbourne)

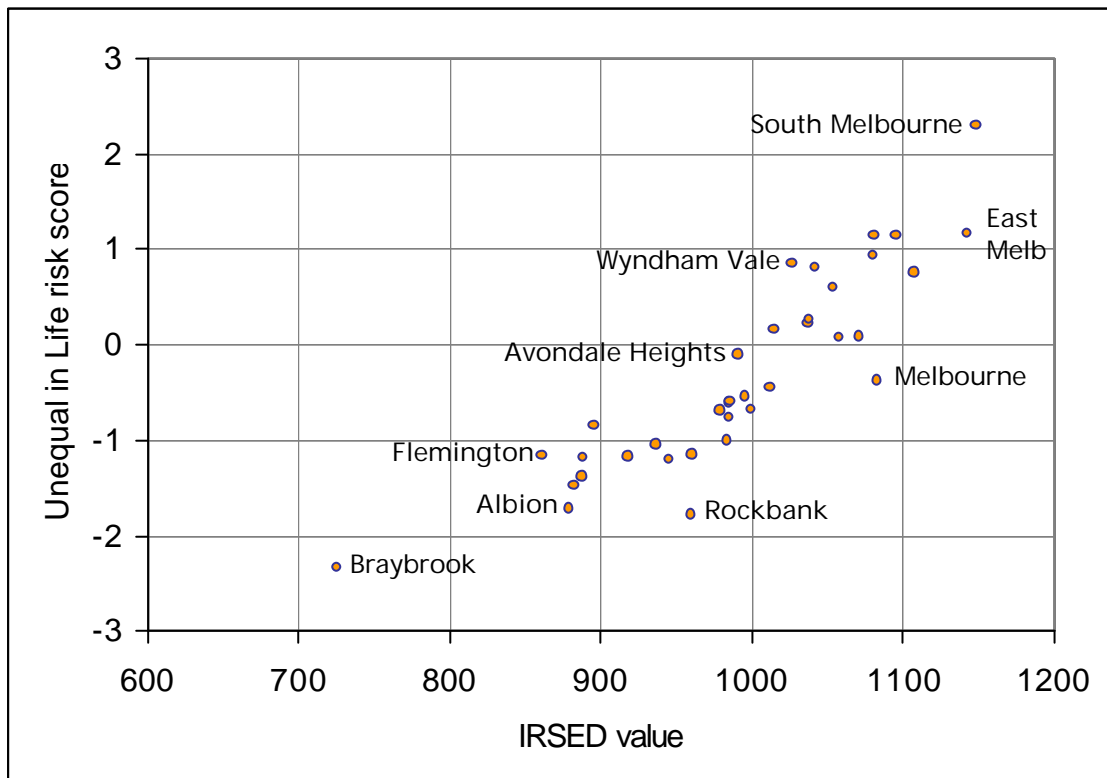
⁴⁹ Source: ABS Socio-Economic Index for Areas 1996

Unequal in Life

In 1999 Jesuit Social Services conducted a study of disadvantage in NSW and Victoria titled Unequal in Life. This study used a variety of social indicators, different to those used to comprise IRSED,⁵⁰ to rank postcodes in Victoria and assign a risk score to each.

When Unequal in Life risk scores are compared with the Index of Relative Socio-Economic Disadvantage they show a strong positive correlation.⁵¹ When graphed against each other, the clustering is visually clear. Postcodes which rate as disadvantaged using both methods appear in the bottom left hand corner of the graph, advantaged postcodes in the top right hand corner. The majority of the Region's postcodes are aligned in an axis from the highly disadvantaged Braybrook to the relatively advantaged South Melbourne.

Correlation of Unequal in Life and IRSED⁵²



Unequal in Life is important because it provides independent confirmation, based on non-ABS data, that there are some areas of the West that are particularly disadvantaged.

⁵⁰ Indicators used included unemployment, substantiated child abuse, low birthweight babies, mortality, court convictions, and psychiatric admissions.

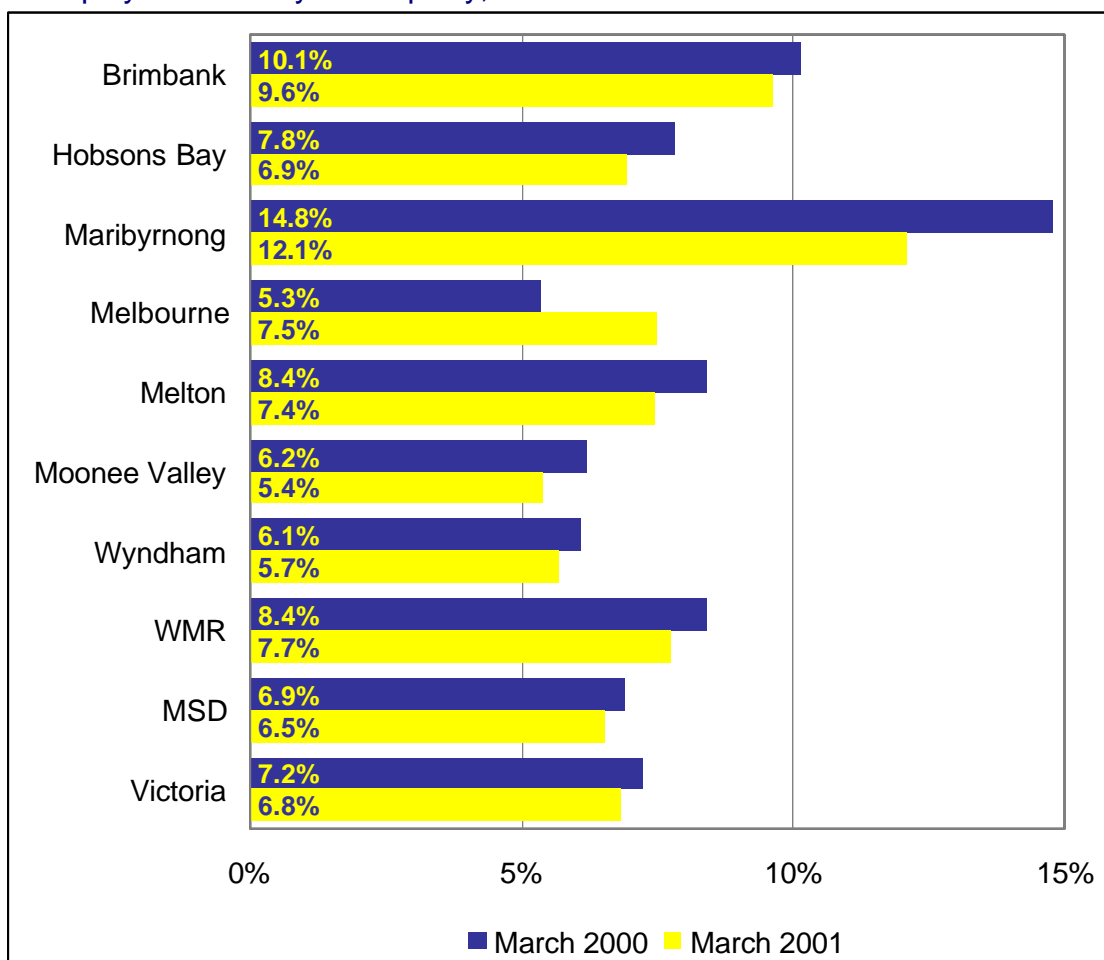
⁵¹ Correlation of 0.887

⁵² Source: Vinson 1999, ABS 1998.

Unemployment

The most recent figures indicate that the unemployment rate for the Western Region is 7.7%. This unemployment rate is higher than the Victorian and Melbourne rate. Within the region, the unemployment rates of Brimbank (9.6%) and Maribyrnong (12.1%) are particularly high. The only Western Region LGAs with an unemployment rate below the MSD average are Moonee Valley and Wyndham. Between March 2000 and March 2001 unemployment fell in all municipalities with the exception of the City of Melbourne, reflecting a statewide fall.

Unemployment rate by municipality, March 2000/2001⁵³

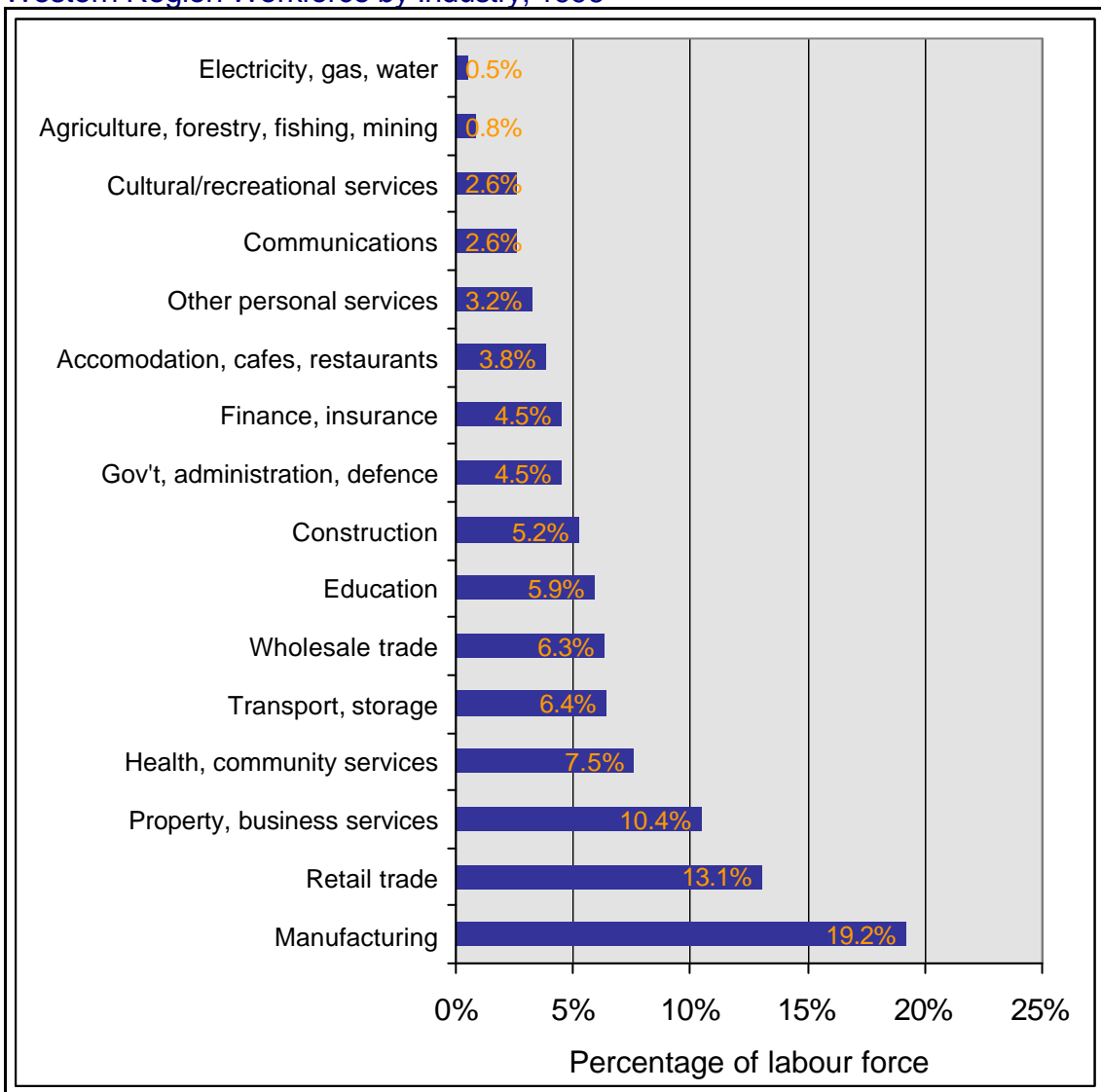


⁵³ Source: Department of Employment, Workplace Relations and Small Business, Small Area Labour Market data, March 2000 and March 2001 quarters.

Industry

The Western Region has traditionally had a strong industrial base. Manufacturing industry accounted for one in five of the West's employed workers in 1996. Brimbank is the strongest manufacturing municipality, with over a quarter of the workforce employed in this industry (26.4%). This is several percentage points higher than Maribyrnong (22.2%). At the last Census, the retail sector (retail trade, restaurants, cafes, accommodation and miscellaneous personal services) also accounted for up to 20% of employment, on a par with manufacturing.

Western Region Workforce by Industry, 1996⁵⁴



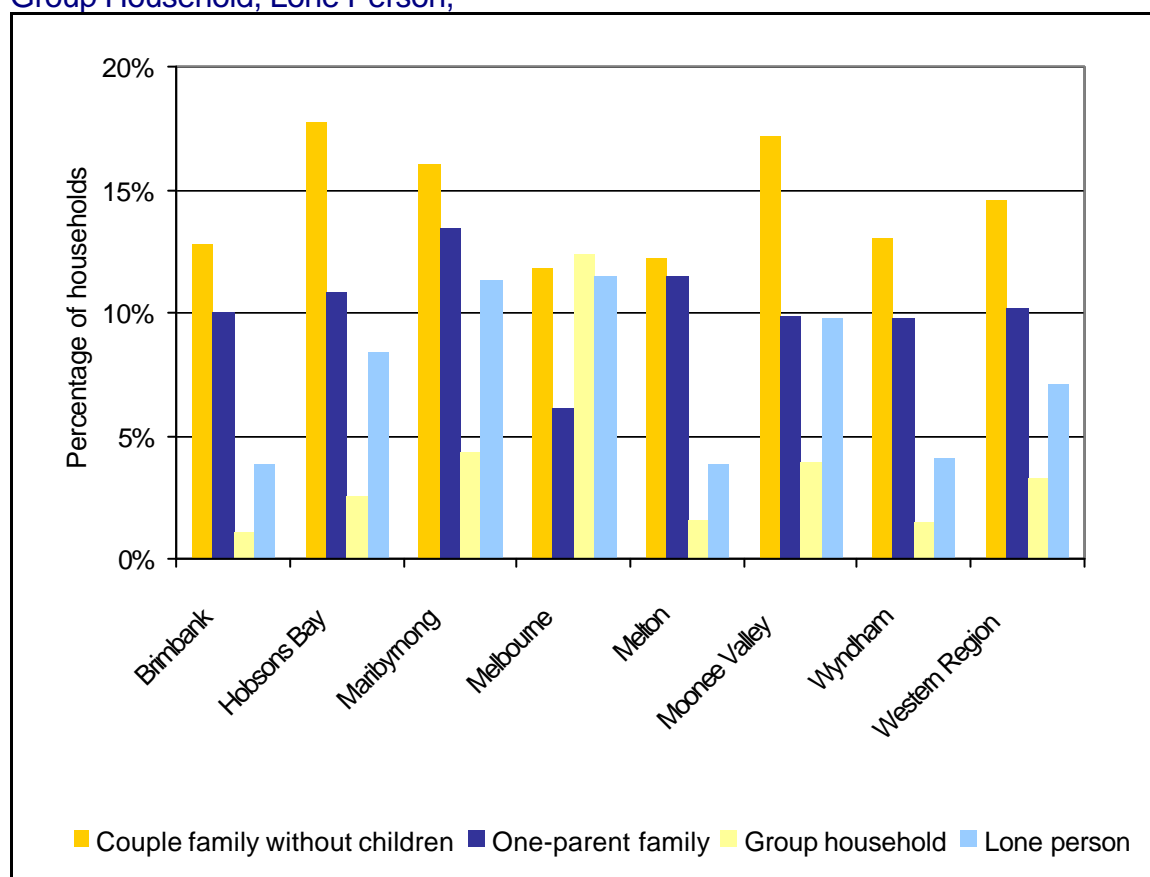
⁵⁴ Source: ABS 1996 Census

Moonee Valley is strong in health workers, at 9.28%, and also in education workers, at 8.62% significantly higher than the Region average of about five per cent. Wyndham has 7.55% government and defence workers, compared to 4% for the Region, perhaps due to the presence at Census time of three RAAF bases in the municipality. Moonee Valley has the most cultural and recreation workers per capita, at 3.22%, followed by Maribyrnong at 3.13%; Brimbank has the lowest, 1.51%. Wyndham, well located to support market gardens, has 1.71% of the workforce involved in agriculture, compared to 0.5% for the Region.

Living Arrangements

Living arrangements are a key indicator of social wellbeing and a determinant of health. Living arrangements of interest, in terms of vulnerability and disadvantage, are one-parent families and those living alone, particularly when considered alongside income. Among the living arrangements that are particularly adversely affected by low incomes (poverty) are one parent families. These families are usually headed by women, live more frequently in rented accommodation and have limited access to employment.

Relationship in Household: Couple Family without Children, One-Parent Family, Group Household, Lone Person,⁵⁵

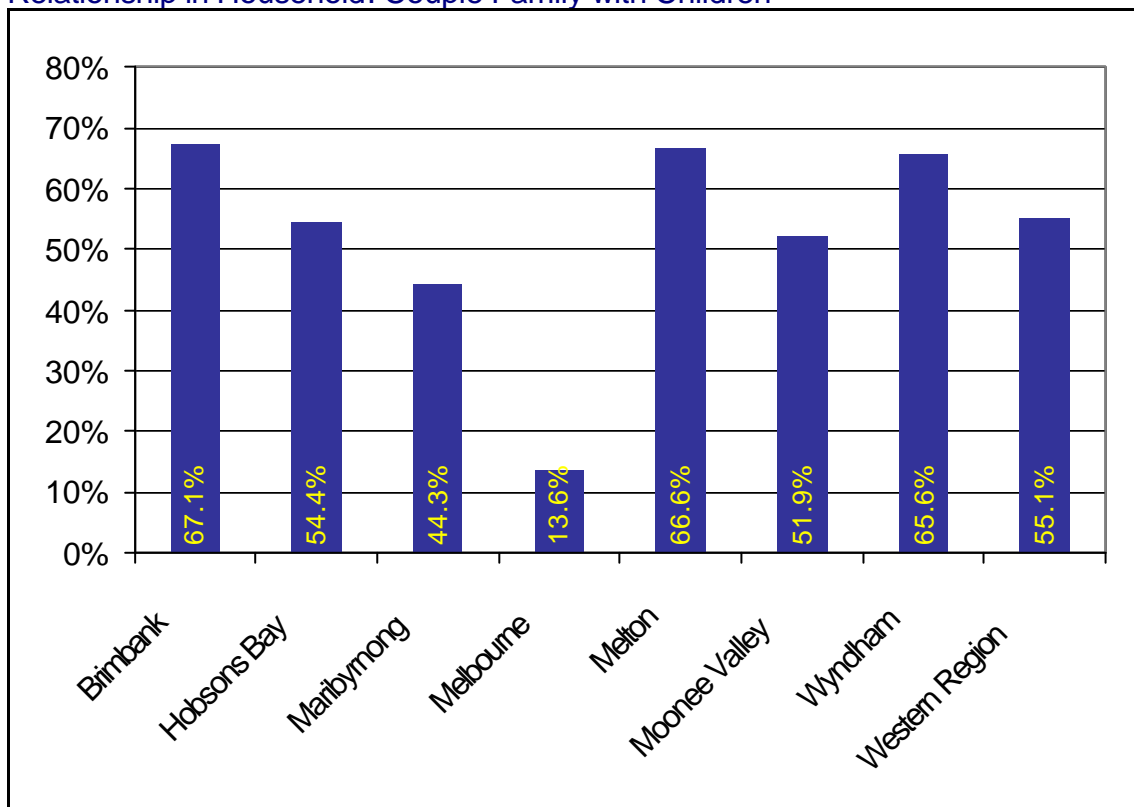


⁵⁵ Source: ABS 1996 Census

The previous and following figures show the main living arrangements in the Region:

- The newly established communities of Brimbank, Melton and Wyndham have the highest proportion of the traditional nuclear family living arrangements of a couple with children. In the City of Melbourne, however, this family type is not as common.
- The established communities of Hobsons Bay and Moonee Valley have higher levels (16 to 18 per cent) of couple families without children. Many of these would be older couples with grown children, but some are young couples starting families.
- The municipalities of Maribyrnong, Melton and Hobsons Bay are above the WMR average for one-parent families.
- The four inner city LGAs (Melbourne, Maribyrnong, Moonee Valley and Hobsons Bay) have above the WMR average of lone households.
- The high number of group households in Melbourne may be due to student accommodation in the Melbourne University/RMIT area.

Relationship in Household: Couple Family with Children⁵⁶



⁵⁶ Source: ABS 1996 Census

Bibliography

Australian Bureau of Statistics. 1996 Census of Population and Housing. Australian Bureau of Statistics, Canberra, 1997

Australian Bureau of Statistics. Socio-Economic Indexes for Areas. Australian Bureau of Statistics, Canberra, 1998

Australian Bureau of Statistics. Census of Population and Housing: ABS Views on Content and Procedures. Australian Bureau of Statistics Canberra, 1998

Australian Bureau of Statistics. 2000 Estimated Resident Population. Australian Bureau of Statistics, Canberra, 2001

Australian Psychological Society. Psychology and Aging: Contributions to the International Year of Older Persons. Working Group of the Directorate of Social Issues, Australian Psychological Society, 2000

Department of Immigration and Multicultural Affairs. English Proficiency 1996 Census. Statistical Report No. 30, Department of Immigration and Multicultural Affairs, 2001.

Department of Infrastructure. Victoria in Future (2000 edition). Department of Infrastructure, Melbourne, 2000

Grace, M, and Shield, L. Western Region Social Profile 1998 (Second Ed.) Outer Urban Research and Policy Unit, Victoria University of Technology, Melbourne, 1999

Vinson, Tony. Unequal in Life. Jesuit Social Services, Melbourne, 1999.

Presland, Gary. The Land of the Kulin. McPhee Gribble/Penguin, Melbourne, 1994

Public Health and Development Division, Department of Human Services. Victorian Burden of Disease Study: Morbidity. Department of Human Services, Melbourne, 1999

Public Health and Development Division, Department of Human Services. Victorian Burden of Disease Study: Mortality. Department of Human Services, Melbourne, 1999

Index

Aboriginal & Torres Strait Islanders	15, 16	low income earners	27, 32
accommodation.....	33	Macedonia	18
Braybrook.....	29	Macedonian	17
Brimbank.....	2, 4, 7, 11, 12, 15, 16, 17, 19, 21, 22, 23, 27, 32, 33	Malta.....	2, 18
Burden of Disease.....	23, 24, 25, 34	Maltese	22
Calder Highway	13	manufacturing.....	2, 31
cancer.....	26	Maribyrnong.....	2, 4, 9, 11, 15, 19, 21, 22, 23, 27, 31, 32, 33
Census.....	7, 12, 15, 17, 18, 19, 27, 31, 32, 34	Maribyrnong River	6, 15
Central Business District.....	5, 8	market gardens	32
children	9, 33	Melbourne.....	15, 19, 23, 27, 28, 29, 33, 34
City of Melbourne	4, 7, 15, 21, 22, 27	Melbourne Statistical Division	4, 27, 28
country of birth.....	17, 18	Melton.....	2, 4, 5, 7, 9, 12, 13, 15, 19, 21, 22, 23, 27, 33
Croatia	18	migrants	18, 20
Croatian.....	17	Moonee Valley.....	4, 7, 9, 11, 12, 15, 19, 21, 22, 23, 27, 30, 33
Cultural and Linguistic Diversity	17, 18	New Zealand	18
Department of Human Services (DHS).....	4	older persons	9
Department of Infrastructure.....	11, 12, 34	one parent families.....	32
Diggers Rest.....	5, 13	one-parent families.....	33
Disability Adjusted Life Year.....	23, 24	Philippines	18
disadvantage.....	22, 27, 29, 32	Poland.....	18
disease	23, 26	Polish.....	17
education.....	32	population	2, 4, 5, 6, 7, 8, 9, 10
employment.....	31, 32	population projections	11, 12
Estimated Resident Population... ..	6, 9, 11, 34	population share	12
family	33	Princes Highway.....	13
Family Stream	21	public transport.....	13
Footscray	2, 8, 13, 15	RAAF bases	8, 32
former Yugoslavia.....	2, 17, 21, 22	Refugee	21
German	17	rented accommodation.....	32
Greece.....	2, 18	resource allocation.....	12
Greek.....	22	Rockbank	5
health.....	23, 32	Serbian.....	17
heart disease.....	26	Skill Stream	21
Hobsons Bay.....	4, 7, 9, 11, 15, 19, 21, 22, 23, 27, 33	Special Assistance Category	21
Hong Kong.....	22	Special Eligibility	21
Horn of Africa.....	21	Special Humanitarian Program.....	21
households	32, 33	St Albans.....	2
Humanitarian Program	21	Sunbury	13
income	22, 32	Transport	13
Index of Relative Socio-Economic Disadvantage	27, 28, 29	Tullamarine Freeway	13
indigenous community.....	15, 16	Unequal in Life.....	29
injuries	23	Unequal in Life risk score	29
Iraq	21	United Kingdom.....	18
Italian	22	Vietnam.....	2, 18
Italy.....	2, 18	Vietnamese.....	22
Jesuit Social Services	29, 34	Werribee.....	2, 5, 7, 13, 15
Keilor	7	Western Highway	13
Language spoken at home	17, 18	Williamstown.....	15
life expectancy.....	23	workforce.....	31, 32
lifestage groups.....	9	Wyndham.....	4, 7, 9, 11, 12, 15, 16, 19, 21, 22, 23, 27, 30, 33
		young people.....	9, 10

Produced by Public Health and Strategic Development
Department of Human Services, Western Metropolitan Region

For copies of this publication contact:
Public Health & Strategic Development 9275-7382

This document is available on the web at www.wil.infoxchange.net.au